

MAGNA Glaskeramik
Straße der Einheit 18 | D - 06179 Teutschenthal
T. +49 34601 - 3970 0 | info@magna-glaskeramik.com

magna-glaskeramik.com

Edition no.4 | 01 | 2020. Errors and misprints reserved.

© Jean-Pierre Cousin / OMNIA

MAGNA 
GLASKERAMIK

Glaskeramik[®] projects
interior + exterior



CONTENTS

01. INTERIOR Bar - Restaurant - Store	03
02. INTERIOR Bathroom	13
03. INTERIOR Kitchen	23
04. INTERIOR Flooring	35
05. INTERIOR Staircase	41
06. INTERIOR Water - Fire	45
07. INTERIOR Design objects	49
08. INTERIOR Walls	55
09. EXTERIOR Facade	69



01. INTERIOR | Bar - Restaurant - Store



Project: Casino Vienna
Architect: Lorenz, A-Wachau
Place: Austria | Vienna
Year: 2009
Material: Polar White patinated, backlit



Project: Night Club "The STAR"

Architect: popup bau, D-Herford
Photo: Martin Stöver Fotografie
Place: Germany | Bremen
Year: 2017
Material: Ocean Blue patinated



Project: Arena Leipzig VIP lounge

Photo: Marcus Bleyl
Place: Germany | Leipzig
Year: 2015
Material: Polar White patinated



Project: Restaurant Gordon Ramsay

Architect: Russell Sage Studio

Place: UK | London

Year: 2012

Material: Champagne Brown patinated



Project: Restaurant Goud

Partner: Michel Opreij & Beisterveld

Processor: Arte Groep

Place: The Netherlands | Rotterdam

Year: 2018

Material: Green , Champagne Brown polished

7



8

Project: Vendsyssel Theatre

Architect: Schmidt, Hammer, Lassen
Photo: Christina Nielsen, SHL
Place: Denmark | Aarhus
Year: 2016
Material: Green polished



Project: Reception Desk

Processor: Naturstein Halbach
Place: Germany | Gronau
Year: 2018
Material: Jade clear polished



Project: Pharmacy Feilitzsch

Architect: RAM Munich
Processor: Roskopf + Partner AG
Place: Germany | Munich
Year: 2017
Material: Polar White patinated



11 **Project: Lomax Ltd**

Place: UK | London
Year: 2016
Material: Polar White polished



Project: Reception Counter

Processor: Alpgranit
Place: Germany | Rheinfelden
Year: 2019
Material: Blue Sky patinated



Project: Innovation project NEST
(Next Evolution in Sustainable
Building Technologies)

Architect: Werner Sobek Group
Photo: Zoëy Braun
Place: EMPA, Switzerland | Zurich
Year: 2018
Material: Polar White patinated

02. INTERIOR | Bathroom



Project: Bathroom | showerwall
Place: Germany | Hamburg | 2017
Material: Polar White polished

Project: Private bathroom
Architect: Fliesen Götting
Place: Germany | Bösel | 2017
Material: Ice Nugget double polished



Project: Private vanity
Place: Germany | Halle | 2014
Material: Jade polished



Project: Showroom Neolith+Glaskeramik
Processor: Dartmann & Gaiatto
Photo: Massimiliano Ciccia
Place: Germany | Düsseldorf | 2019
Material: Black patinated

15



MAGNA_® Glaskeramik | INTERIOR | BATHROOM

Project: Bathroom doors + shower wall

Design: Laura Sole Interiors
Place: UK | London
Year: 2017
Material: Ice Nugget double polished



16

MAGNA_® Glaskeramik | INTERIOR | BATHROOM

Project: UBS Bank headquarters

Architect: Make Architects
Place: UK | London
Year: 2014
Total area: 75 bathrooms with 220 sqm
Material: Polar White polished, backlit



Project: Washroom vanity

Place: UK | Heathrow
Year: 2006
Material: Jade patinated

Project: Private bathroom

Processor: Fliesen Götting
Place: Germany
Year: 2019
Material: Ice Nugget polished



Project: Bathroom | showerwall
Design: Bilska de Beaupuy
Photo: Naaro
Place: UK | London
Year: 2017
Material: Polar White polished, curved

Project: Private house
Design: José Miguel García Agustín
Place: Spain | Valencia
Year: 2018
Material: Light Grey polished



Project: Washbasin
Place: Germany
Year: 2008
Material: Creme White patinated

Project: Bathroom shelf
Place: Germany
Processor: Fliesen Baas
Year: 2016
Material: Ice Nugget double polished



Project: Bathroom at BAU fair

Design: Magna Glaskeramik
Place: Germany | Munich
Year: 2019
Material: Ice Nugget double side polished



Project: Bathroom + Walk-in closet

Design | Photo: Mirco Portolani
Place: Switzerland
Year: 2017
Material: Ice Nugget, double side polished





03. INTERIOR | Kitchen

Project: Kitchen worktop

Architect: Lucas Mueller, Arcass Architekten

Place: Stuttgart | Germany

Year: 2007

Material: Jade polished, 2+2 cm



Project: Kitchen splashback

Designer: Josef Landauf, Lavisio
Place: Austria
Year: 2015
Material: Ocean Blue polished



Project: Private kitchen worktop

Designer: Nelson Design
Place: UK | London
Year: 2017
Material: Green polished



Project: Kitchen worktop

Architect: Coverings etc.
Place: USA | Miami
Year: 2010
Material: Ocean Blue patinated



Project: Kitchen worktop

Place: Germany | Hamburg
Year: 2016
Material: Creme White patinated, backlit, with bridge



Project: Kitchen worktop Beach

Design: Ethan Gil Studio
Place: UK | Cambridge
Year: 2014
Material: Polar White polished



Project: Kitchen sink
Place: USA | Florida | 2009
Material: Jade patinated

Project: Kitchen splashback
Place: UK | London | 2016
Material: Polar White polished

29 **Project:** Kitchen worktop | bar DS4

Design: Victor Ruiz
Place: Spain | Madrid
Year: 2018
Material: Polar White patinated



30

Project: Private Kitchen

Design: Tomasz Hanzlik
Place: Czech Republik
Year: 2007
Material: Jade polished



Project: Kitchen worktop
Place: UK | London | 2010
Material: Creme White patinated, backlit

Project: Kitchen worktop
Architect: Lucas Mueller | Foto: Dietmar Strauss
Place: Stuttgart | Germany | 2015
Material: Polar White polished



Project: TALA kitchen worktop

Design: Joe Armitage
Place: UK | London
Year: 2018
Material: Polar White polished



Project: Showroom

Processor: RBS Elektroinstallation GmbH
Place: Germany | Potsdam
Year: 2019
Material: Black patinated





04. INTERIOR | Flooring



Project: Floor Goralska Jewelery

Design: Goralska

Processor: Ringot & Villarecci

Photo: Julio Piatti

Place: France | Paris

Year: 2017

Material: Polar White patinated

Project: Porsche Museum

Processor: Roskopf und Partner AG
Place: Germany | Stuttgart
Year: 2018
Material: Jade polished
Total aerea: 200 sqm



Project: Luxury shop in Paris

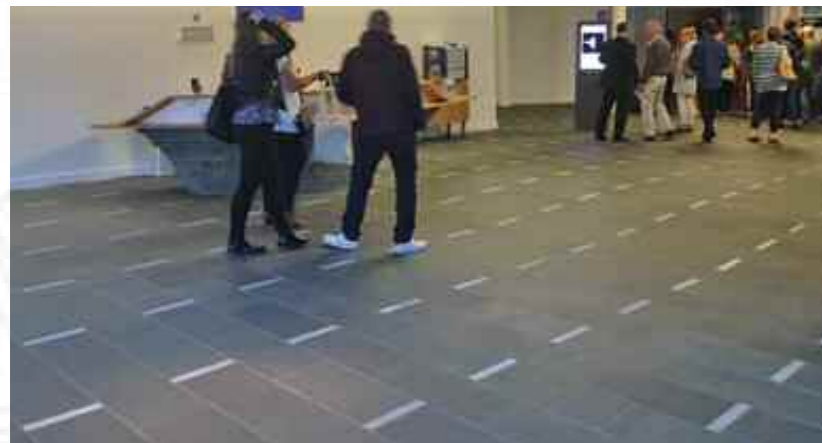
Place: France | Paris
Year: 2017
Material: Green polished



Project: Floor Int. Conference Center

Place: Scotland | Edinburgh
Year: 2011
Material: Polar White patinated

39



Project: Floor Escenium at Casadecor

Design: José Hernández
Place: Spain | Madrid
Year: 2018
Material: Ice Nugget polished

40





05. INTERIOR | Staircase



Project: Staircase private + bar
Place: USA | Miami
Year: 2010
Material: Polar White patinated, backlit



Project: Staircase private home

Design: Dieter Simon
Photo: Germany | Hammelburg
Year: 2010
Material: Jade patinated, 2+2 cm



Project: Windowsill private home

Design: Takero
Place: UK | London
Year: 2010
Material: Jade patinated



Project: Mockup Fountain

Design: Norman Foster Architect
Place: Kuwait | International Airport
Year: 2014
Material: Polar White patinated

06. INTERIOR | Water - Fire



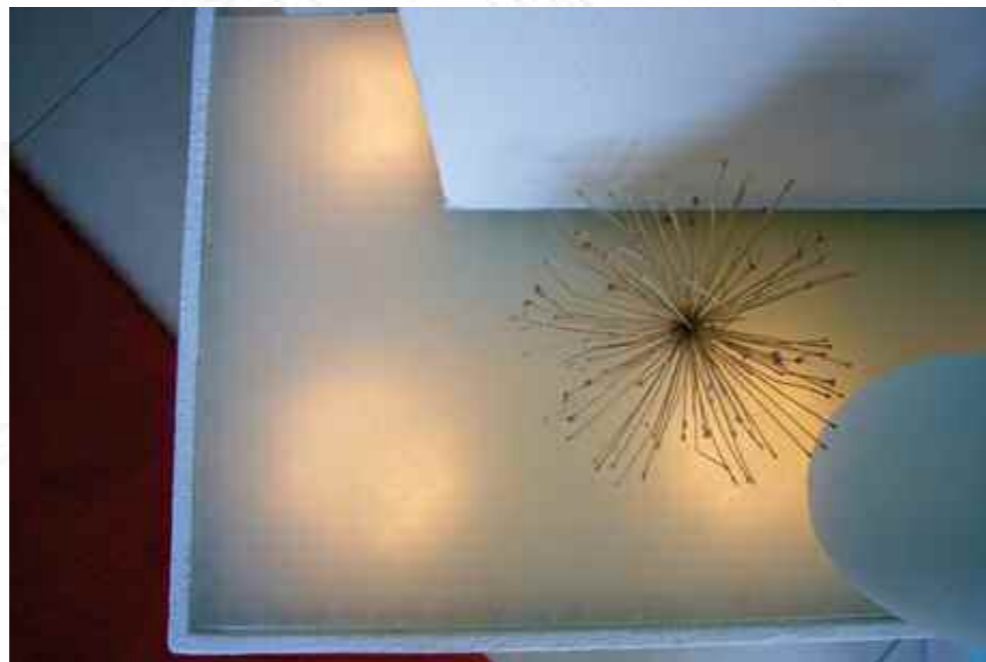
Project: GMP villa Elbchaussee

Architect: von Gerkan, Marg & Partner
Photo: HGEsch, Hennef
Place: Germany | Hamburg
Year: 2015
Material: Jade patinated, 2+2+2



Project: Private Fireplace

Place: Germany | Berlin
Year: 2008
Material: Jade patinated, backlit



Project: Waterwall Hotel Europlaza

Architect: Neumann & Partner
Photo: Roskopf + Partner
Place: Austria | Vienna
Year: 2009
Material: Jade patinated



47 **Project:** Fountain shopping mall

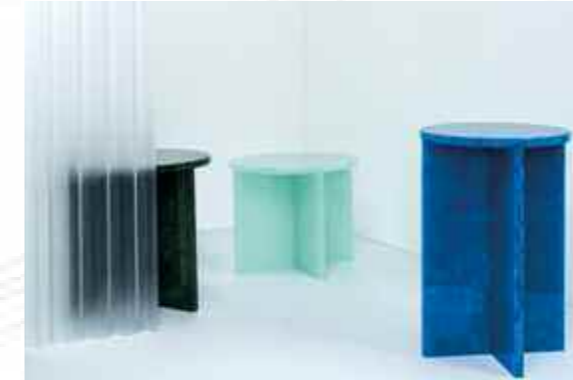
Architect: bds architects
Place: Germany | Lübeck
Year: 2015
Material: Green polished



48



07. INTERIOR | Design objects



Project: Pulpo table Font round | Font high | Font low

Designer: Sebastian Herkner
Photo: www.pulpoproducts.com
Place: Germany | Lörrach
Year: since 2016
Material: Ocean Blue | Jade | Green polished



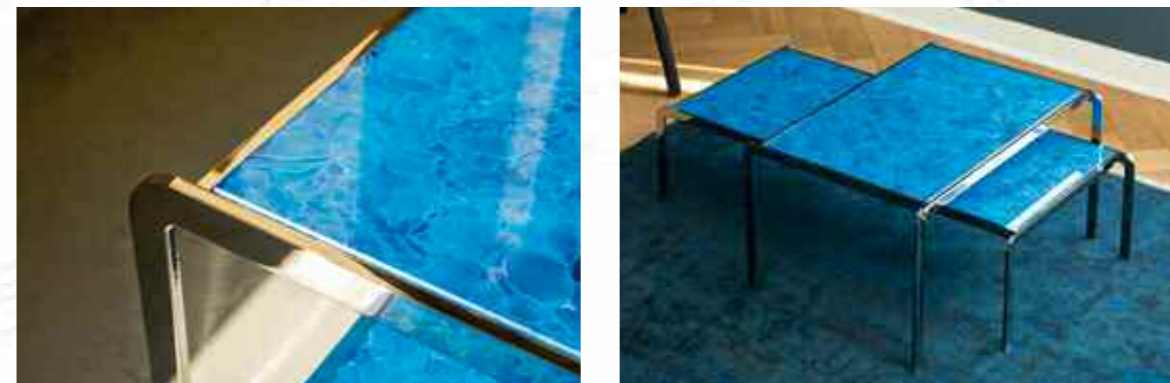
Project: TALA lighting design

Design: tala®
Place: UK | London
Year: 2019
Material: Polar White double side polished, 12 mm



Project: Causa Elbow table

Designer: Andreas Kowalewski
Photo: www.causa.de
Place: Germany | Münster
Year: 2017
Material: Ocean blue polished | clear chrome



Project: Grand piano

Partner: Michel Oprey&Beisterveld
Processor: Jan Reek natuursteen
Designer: Sandra Jansen
Place: Netherlands | Amsterdam | Masters of LXRY
Year: 2018
Material: Black patinated, backlit, curved



Project: Counter at Dental Practice

Processor: Dinger Stone
Designer: Herzog, Kassel & Partner
Place: Germany | Freiburg/Breisgau
Year: 2018
Material: Ice Nugget patinated





08. INTERIOR | Walls



Project: Hotel Castiglione
Architect: Remy Lacau, Lacau&Associés
Processor: Ringot & Villarecci
Photo: Jean-Pierre Cousin / OMNIA
Place: France | Paris
Year: 2018
Material: Polar White polished, backlit



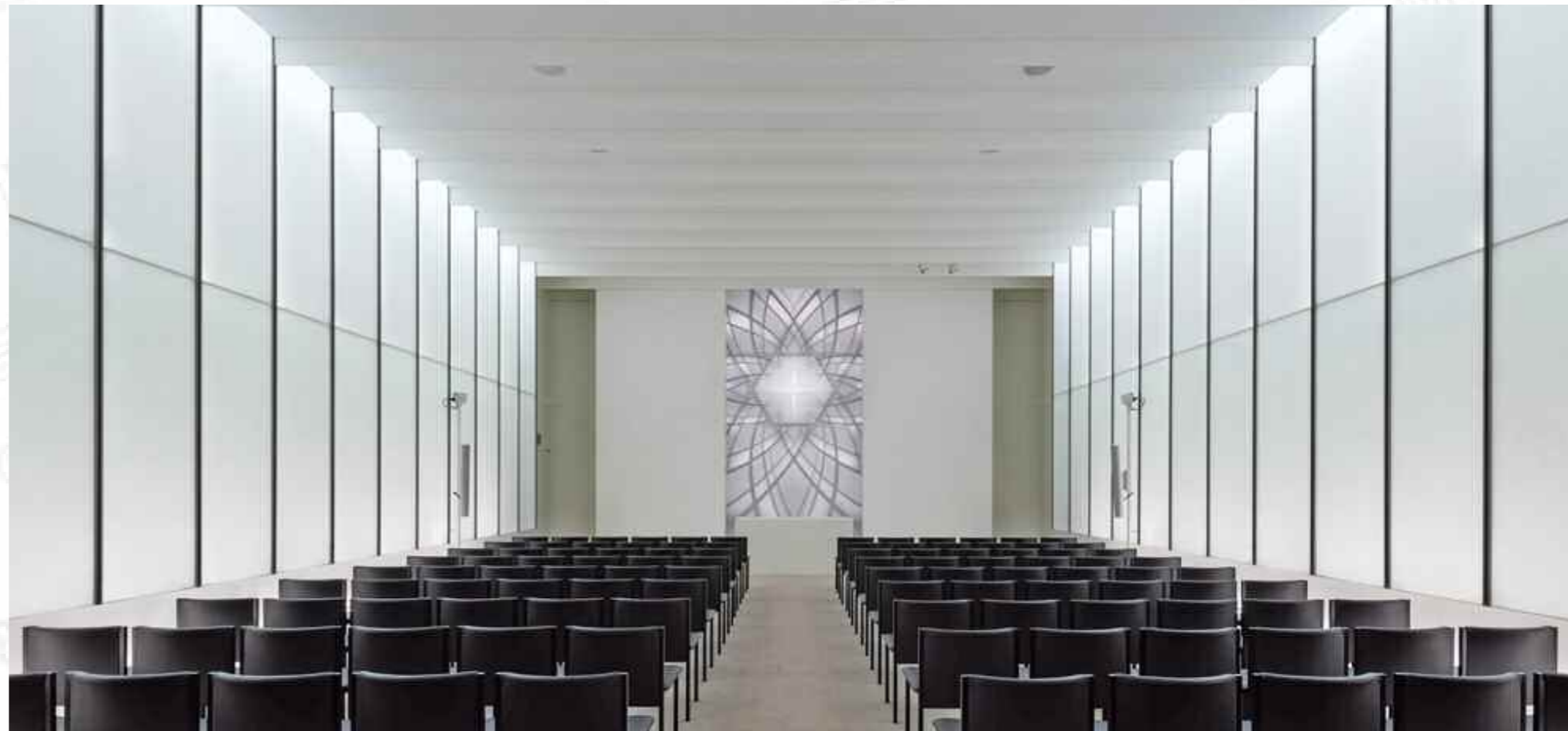
Project: Chapel Hofgeismar

Architect: gmp architects
Place: Germany | Hofgeismar
Year: 2010
Material: Creme White polished
Total area: 170 sqm



Project: GLA Chukyo Hall, Prayer Hall

Architect: Takenaka Corp.
Photo: Shigeo Ogawa
Place: Japan | Nagoya
Year: 2016
Material: Polar White polished, laminated, backlit
Total area: 190 sqm



Project: Kolumbarium Church

Architect: gmp architects
Processor: Rundmund Naturstein
Place: Germany | Marl-Hüls
Year: 2018
Material: Polar White patinated



Project: St. Sebald Church Info box

Architect: Christine Kayser
Photo: Marcus Bleyl
Place: Germany | Nuremburg
Year: 2016
Material: Creme White patinated, backside with anti-shatter film
Total area: 40 sqm



Project: Guangzhou Development
Central Building

Architect: Gerkan, Marg & Partner
Place: China | Guangzhou
Year: 2003
Material: Jade patinated
Total area: 2400 sqm



Project: Naturalia shops headquarters

Architect: Kengo Kuma
Place: France | Paris
Year: 2011
Material: Polar White patinated, anchor fixing
Total area: 120 sqm



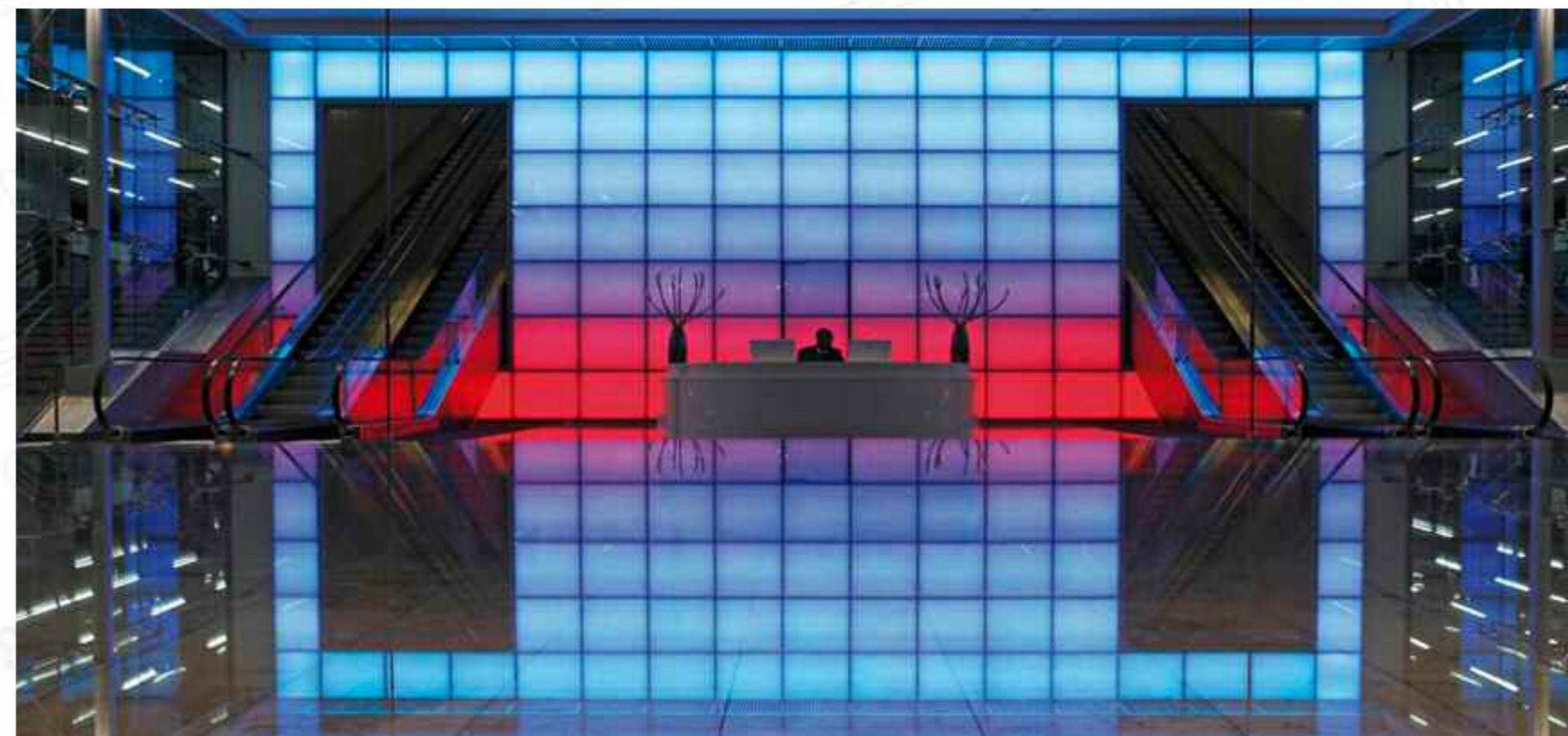
Project: Tram Station
Architect: Georg Ruhnau
Place: Germany | Essen
Year: 2017
Material: Ocean Blue, Polar White, Green polished



Project: Cannon Place Station
Architect: Foggo Assoc.
Place: UK | London
Year: 2011
Material: Polar White polished, backlit
Total area: 210 sqm

63 **Project:** Masdar City PRT Station

Architect: Foster + Partners | GPI Design
Place: UAE | Abu Dhabi
Year: 2010
Material: Polar White polished, backlit
Total area: 200 sqm



64

Project: Room separation wall

Architect: TPS Fedor Sukatus
Photo: Holger Nimitz
Place: Germany | Berlin
Year: 2017
Material: Ice Nugget double polished



Project: Separation wall door

Architect: Gente
Place: Czech Republic | Prag
Year: 2018
Material: Polar White polished, naturally backlit



Project: Elevator hall

Architect: Ortiz y León
Photo: Colonial
Place: Spain | Madrid
Year: 2018
Material: Jade patinated
Total area: 380 sqm



Project: Browary Warszawskie

Architects: JEMS
Place: Poland | Warsaw
Year: 2018
Material: Light Grey-Green polished
Total area: 100 sqm
Material elevator halls: Polar White polished
Total area: 500 sqm





09. EXTERIOR | Facades

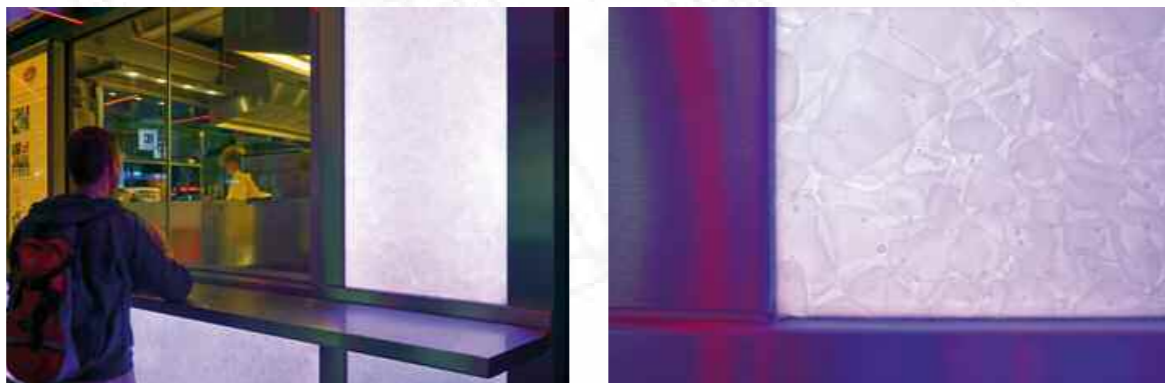


Project: Bassengbakken II
Architect: Agraff
Photo: Henrik Larsen
Place: Norway | Trondheim
Year: 2015
Material: Jade patinated, ventilated rainscreen cladding with Fischer FZG-G-Z anchor
Total area: 440 sqm



Project: Food stand
 "Zur Bratpfanne"

Lighting Design: Naveen Mehling
Photo: Marcus Bleyl
Place: Germany | Berlin
Year: 2014
Material: Polar White polished, backlit
Total area: 35 sqm



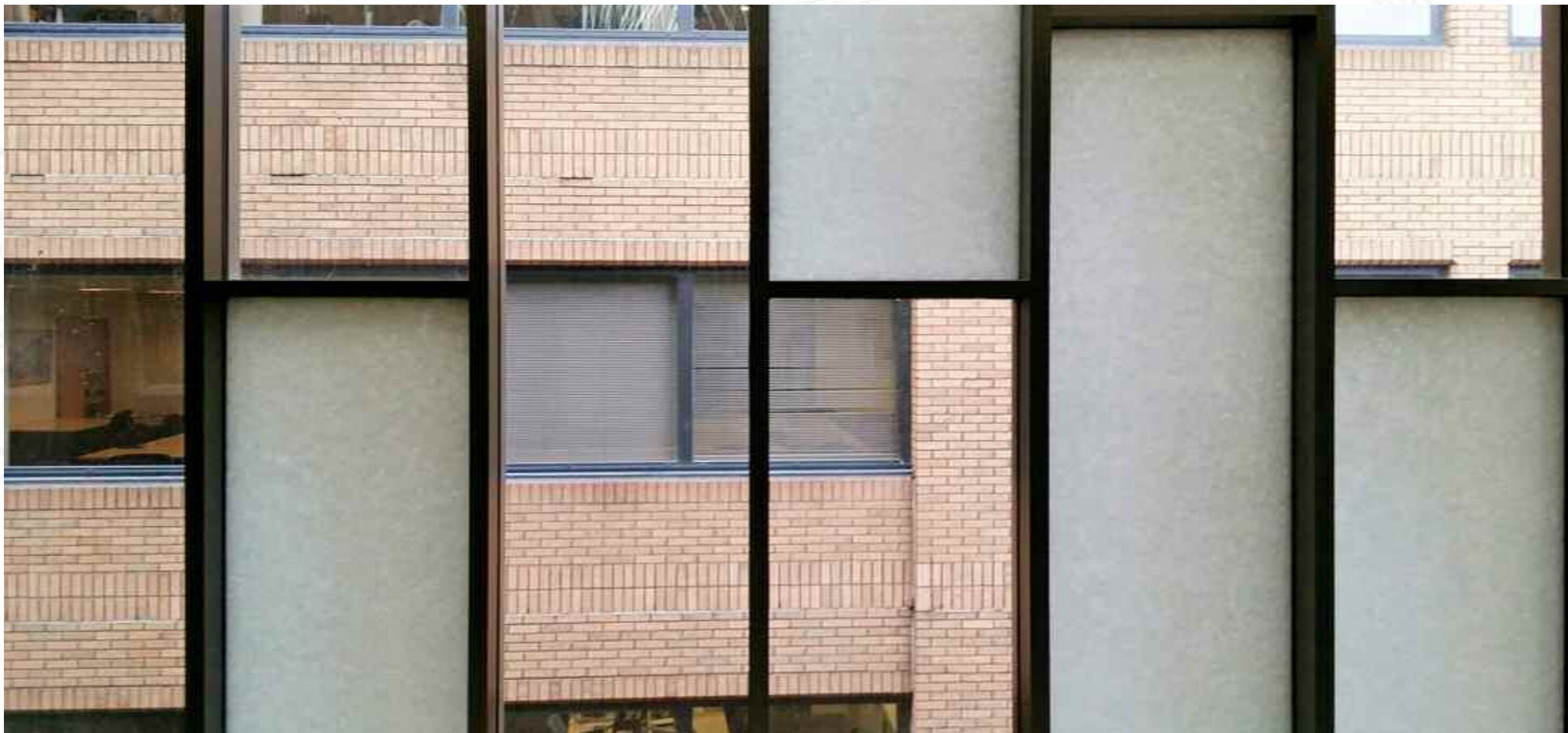
Project: DM drug store

Architect: Rossa & Partner
Place: Germany | Schondorf
Year: 2015
Material: Polar White+Green patinated, backlit
Total area: 65 sqm



Project: Appart Hotel Bear Gardens

Architect: SPPARQ Architects
Place: UK | London
Year: 2016
Material: Jade polished, insulated
Total area: 55 sqm



Project: Dashwood House

Architect: Hunter Evans
Place: UK | London
Year: 2008
Material: Jade patinated, undercut anchor
Total area: 120 sqm



Project: Berkeley Hotel Knightsbridge

Architect: Rogers Stirk Harbour + Partners

Place: UK | London

Year: 2016

Material: Polar White polished, coloured anti shatter film, undercut anchor

Total area: 55 sqm



Project: Augenzentrum

Architect: Heinle, Wischer & Partner

Place: Germany | Michelfeld

Year: 2004

Material: Jade patinated, ventilated rainscreen cladding

Total area: 300 sqm



Project: Talbot Council Offices

Architect: AHR
Place: UK | Blackpool
Year: 2013
Material: Polar White patinated,
ventilated rainscreen cladding with
Fischer FZG-G-Z anchor
Total area: 350 sqm



Project: Fire station

Architect: Markus Kasuch
Place: Germany | Neukirchen-Vluyn
Year: 2018
Material: Polar White patinated,
ventilated rainscreen cladding with
Fischer FZG-G-Z anchor
Total area: 183 sqm



Project: Museum Folkwang
Architect: David Chipperfield
Photo: Christian Richter
Place: Germany | Essen
Year: 2009
Material: Jade + Creme White patinated, ventilated rainscreen cladding with Fischer FZG-G-Z anchor
Total area: 3800 sqm



Project: Bauhaus Museum Weimar
Architect: Heike Hanada
Photo: Andrew Albert
Place: Germany | Weimar
Year: 2019
Material: Ice Nugget, lighting elements
Total area: 2,880 running metres



Project: Mehr.WERT.Pavillon
Architect: KIT Karlsruhe | office 2hs
Photo: Zooey Braun
Place: Germany | Heilbronn
Year: 2019
Material: Polar White, Jade, Green, Champagne Brown patinated,
no adhesives, silicone joints, paints
Total area: 130 sqm

